

House Energy and Technology Committee

Testimony Supplement 2/17/2021

Christa Shute

Christa.shute.esq@gmail.com

VTA Open Access Fiber

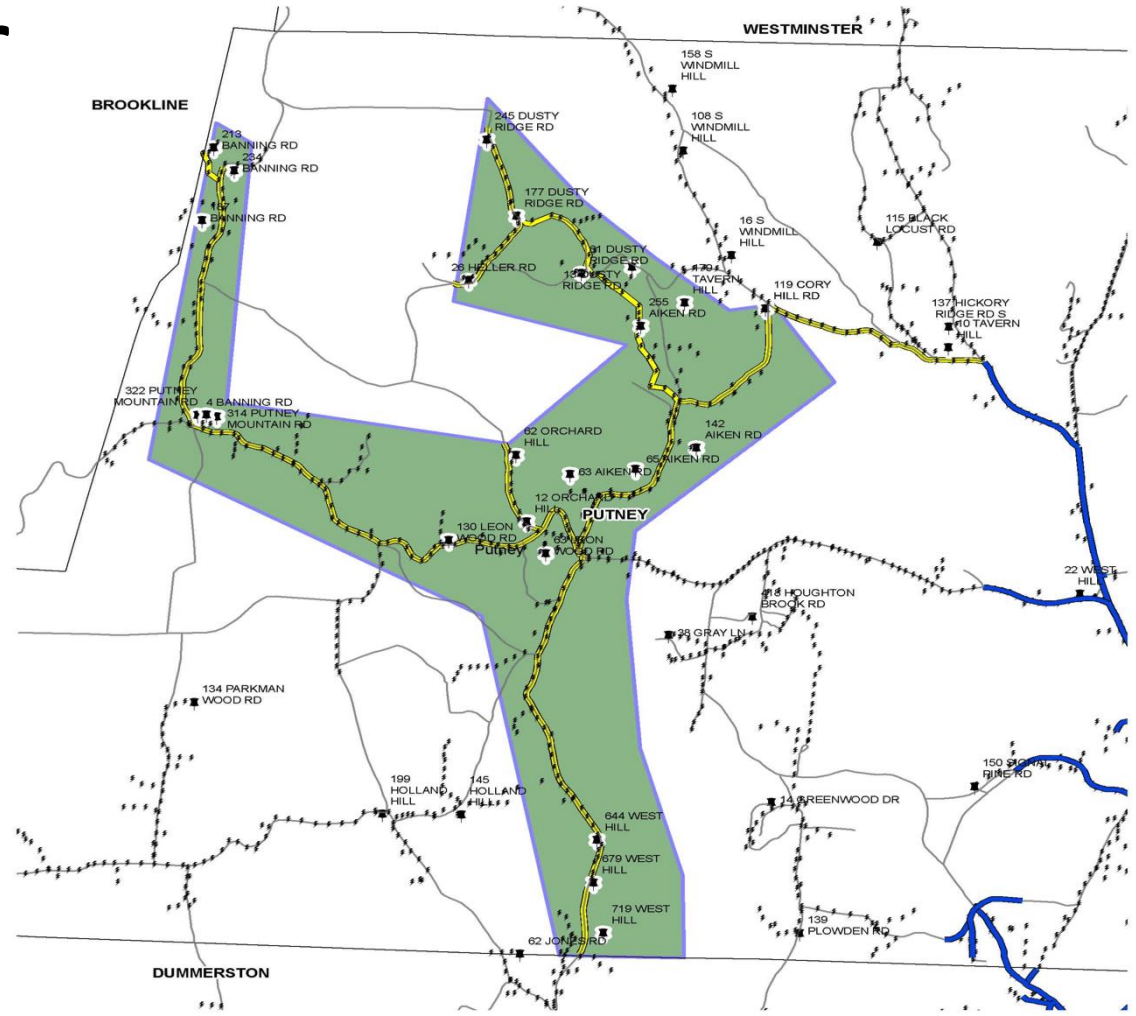
- The VTA will make its fiber projects available on the following basis:
- *Open access* – any provider of retail or wholesale communications services to the public (“Carrier”), utility, or governmental user can license fiber facilities from the VTA.
- *Non-discrimination* – any Carrier, utility, or governmental user will have access to similar pricing and material terms and conditions as other similarly-situated Carrier, utility or governmental users. The VTA’s business practices and technical mechanisms will not favor any individual user with regard to access to capacity or facilities.
- *Dark Fiber* – The VTA only supplies dark fiber. No retail service is provided by the VTA. Dark fiber licensees are solely responsible for lighting fiber, as well as provisioning optronics and network equipment from the licensed points of demarcation.

VTA Fiber Assets

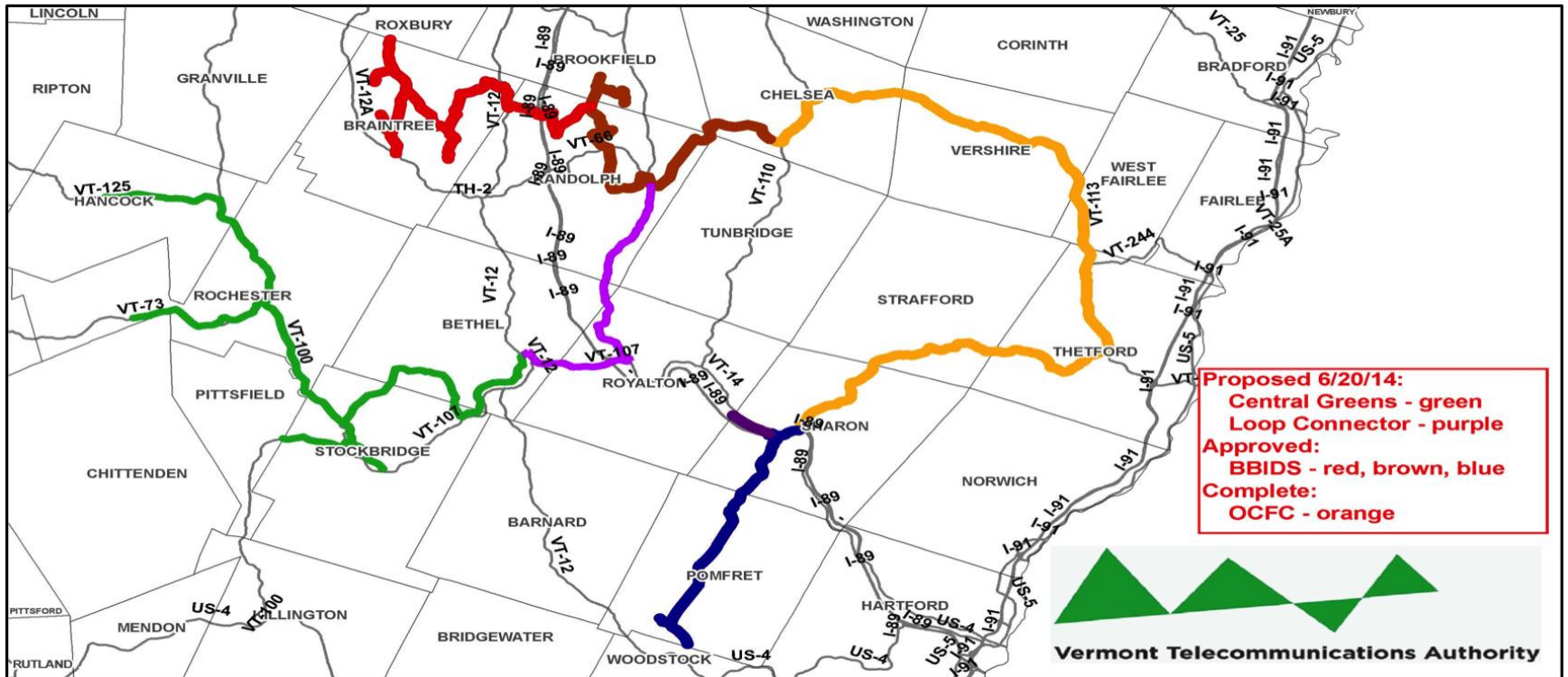
- Northeast Kingdom Fiber Network (NEK CUD)
- OCFC and Central Vermont (ECFiber CUD)
- Putney (Deerfield CUD) –

Putney Fiber

- 13 miles of 144 strand fiber
- 120 strands licensed to VTA for life of fiber
- \$249,600 State BBID investment dollars
- No operational costs until in use – then proportional
- Deerfield CUD



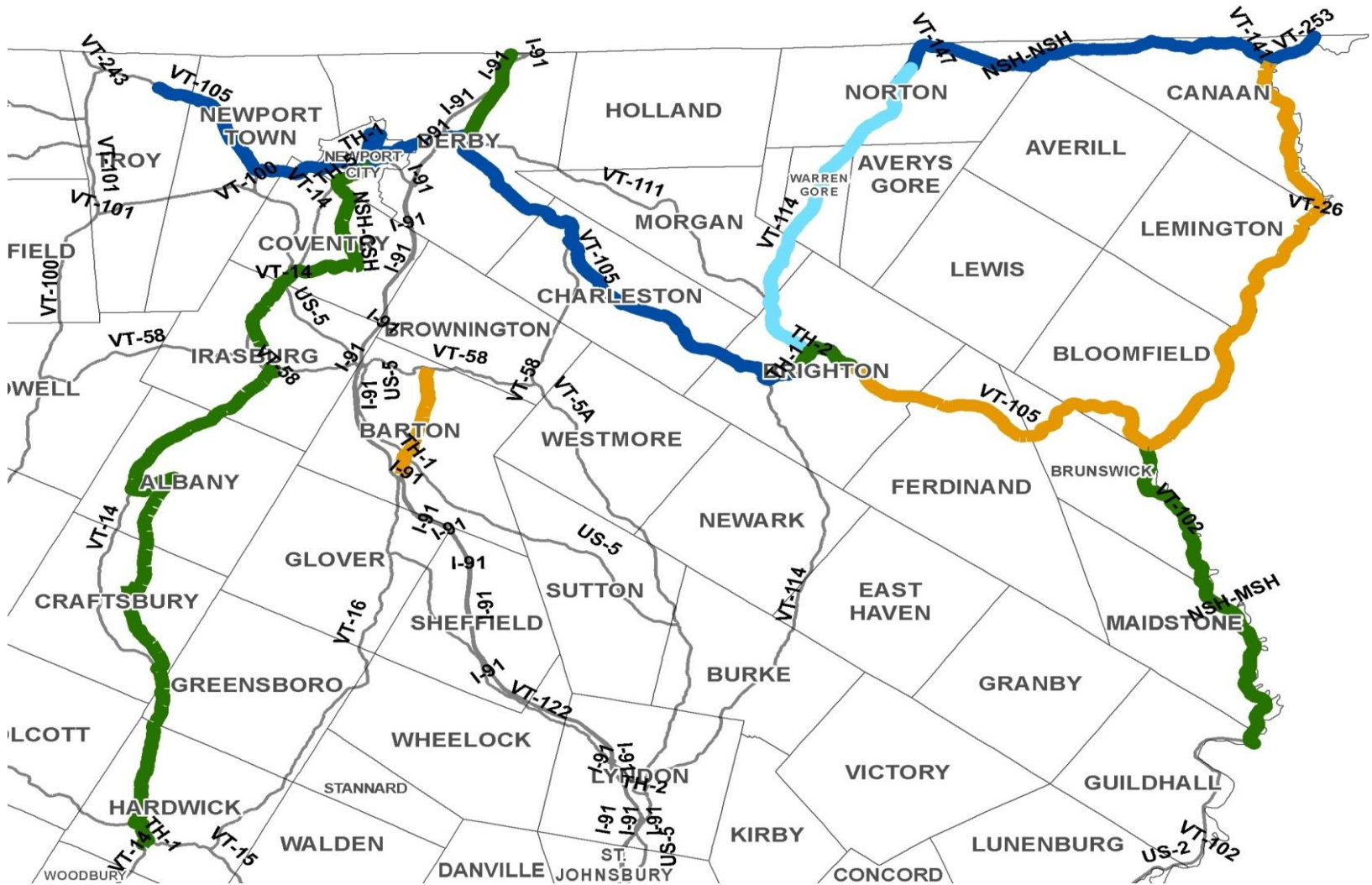
East Central Vermont Fiber



Central Vermont Fiber

- OCFC
 - VTA Owned, 31 miles of 144 strand fiber
 - Licensees: ValleyNet and Consolidated
- Central Greens, OCFC West and South, Windsor
 - ValleyNet owned 117.5 of 144 strand fiber
 - 96 strands licensed to VTA for life of fiber
 - No current operational costs until licensed strands used

NEK Fiber Network



Northeast Kingdom Fiber Network

Region	Owner	VTA Strand	Miles	
Hardwick to Newport	VTA	144	41	
Brighton to Norton	VTA	144	14	
Derby Line	VTA	144	4.5	
Bloomfield to Guildhall	NHOS	132	16	
NEK Connector	VEC	120	55	
North-Link	NE	12	36.5	
Canaan Spurs	VTA/N CIC	144	2.5	
Orleans Barton			5.2	
AOT				